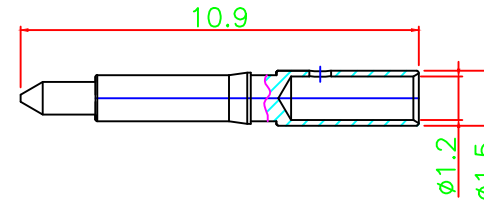
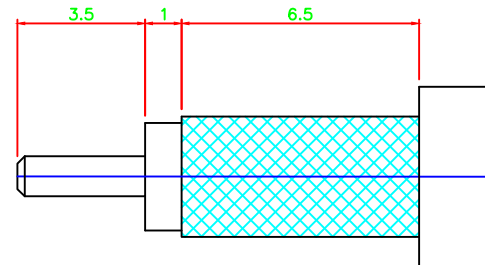
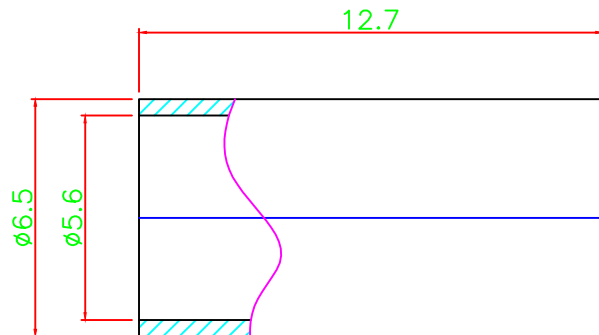


Solder or .047" / 1.2mm Hex.



.217" / 5.5mm Hex.



NO	Items	Specs
1	Impedance	50Ω
2	Frequency	DC~6GHz
3	V.S.W.R	1.2 Max
4	Working Voltage	500V
5	Dielectric Withstanding Voltage	AC 1500V
6	Insulation Resistance	5000 MΩ Min
7	Contact Resistance	Center contact ≤ 3.0mΩ Outer contact ≤ 2.0mΩ
8	Temperature Range	-55°C ~ +165°C
9	Mating	Screw-On
10	Material/Finish	All RoHS Compliant

NO	Description	Material	Finish
1	Shell	Brass	Gold
2	Body	Brass	Gold
2	Insulator	Teflon	-
3	Contact	Brass	Gold
4	Sanp Ring	SUS304	-
5	Gasket	Silicone	-
6	Ferrule	Brass	Gold

Dimensions Are In Millimeters  
Unless Otherwise Specified  
Tolerances

0.5-6 = ± 0.2
6-30 = ± 0.4
30-120 = ± 0.6
120-315 = ± 1.0
315-1000 = ± 1.6
1000-2000 = ± 2.4

**ROHS COMPLIANT**

**COSMTEC** COSMTEC RESOURCES CO., LTD

DRAFT      CHECKED      APPROVED

The Drawing Contains Information That Is Proprietary To Cosmtec Resources Co., Ltd And Should Not Be Used Without Written Permission.      www.cosmtec.com

Part No.	S-001-200		
Title:	SMA PLUG RP CRIMP FOR LMR200 CABLE		
DATE:	SCALE:	UNIT	REV
MAR/25/2022	1:1	m/m	A