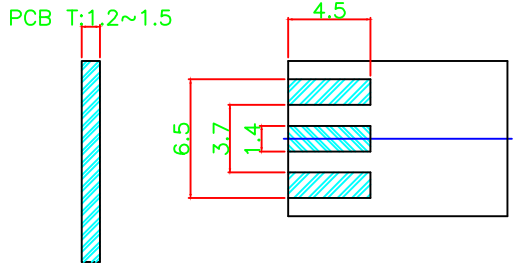
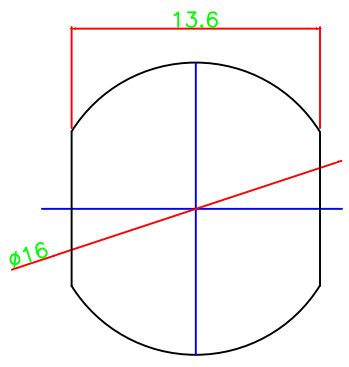
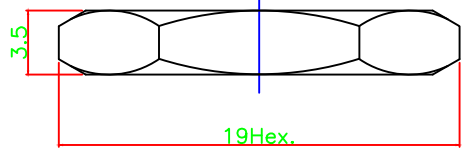
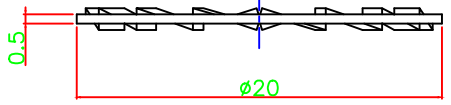


5/8"-24UNEF-2A



PCB Layout Recommed



RECOMMENDED MOUNTING HOLES

NO	Items	Specs
1	Impedance	50Ω
2	Frequency	DC~6GHz
3	V.S.W.R	1.3 Max
4	Working Voltage	500V
5	Dielectric Withstanding Voltage	AC 1500V
6	Insulation Resistance	5000 MΩ Min
7	Contact Resistance	Center contact ≤ 3.0mΩ Outer contact ≤ 2.0mΩ
8	Temperture Range	-55°C ~ +165°C
9	Mating	Screw-On
10	Material/Finish	All RoHS Compliant

NO	Description	Material	Finish
1	Body	Brass	Nickel
2	Contactior	Brass	Gold
3	Insulator	Teflon	-
4	Joint Body	Brass	Gold
5	Nut	Brass	Nickel
6	Washer	Brass	Nickel
7	Gasket	Silicone	-

Dimensions Are in Millimeters
Unless Otherwise Specified
Tolerances

0.5-6 = ± 0.2
6-30 = ± 0.4
30-120 = ± 0.6
120-315 = ± 1.0
315-1000 = ± 1.6
1000-2000 = ± 2.4

ROHS COMPLIANT

COSMTEC COSMTEC RESOURCES CO., LTD

DRAFT CHECKED APPROVED

The Drawing Contans Information That Is Proprietary To Cosmtec Resources Co., Ltd And Should Not Be Used Without Written Permission. www.cosmtec.com

Part No.	N-066-3		
Title:	N JACK SOLDER BULKHEAD EDGE MOUNT		
DATE:	NOV/19/2020	SCALE:	1:1
UNIT	m/m	REV	B