

SMA Female Connector Solder Edge Mount
RF Connector Technical Data Sheet
S-060-3

Configuration

- SMA Female Connectr
- Solder
- 50 Ohms
- Edge Mount

Features

- Max VSWR of 1.25 : 1 up to 18 GHz
- SMA Interface compliant with MIL-STD-348A

Applications

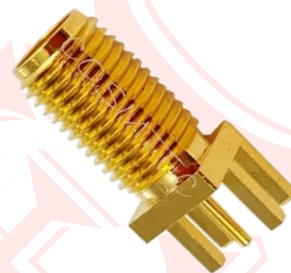
- General Purpose Test

Electrical Specifications

Description	Minimum	Typical	Maximum	Units
Frequency Range	DC		18	GHz
VSWR			1.25 : 1	

Mechanical Specifications
Size

Length	[mm]	17.5
Width	[mm]	6.35
Height	[mm]	6.35
Weight	[g]	2.10



SMA Female Connector Solder Edge Mount
RF Connector Technical Data Sheet
S-060-3

Weight

Description	Connector
Type	SMA Female
Polarity	Standard
Interface Specification	MIL-STD-348A MIL-C-39012
Mating Cycles	500

Material Specifications

Connector 1		
Description	Material	Plating
Type	SMA Female	-
Contact	Beryllium Copper	Gold
Insulation	PTFE	-
Body	Brass	Gold

Environmental Specifications
Temperature

Operating Range -60 to +165 deg C

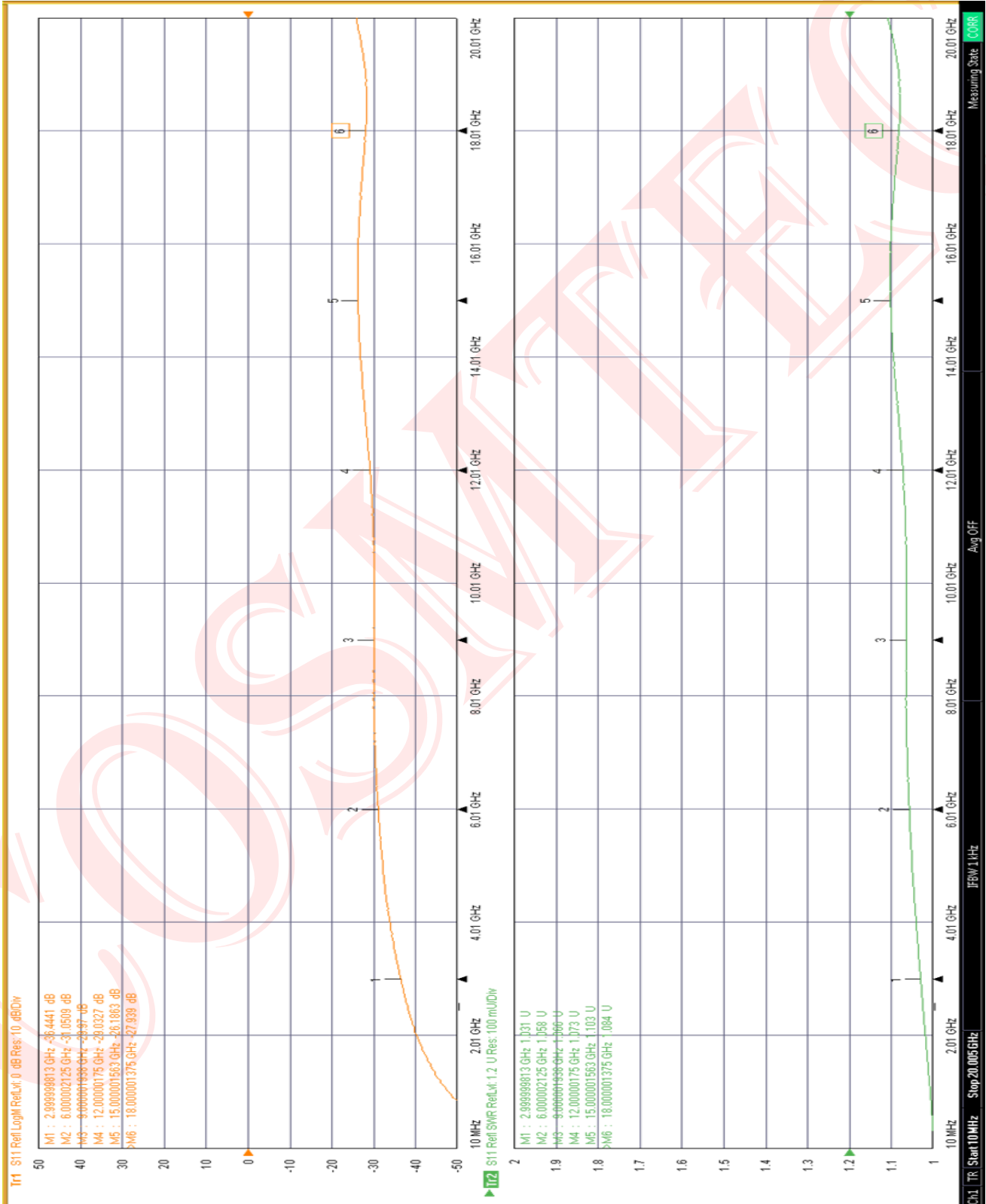
Compliance Certifications

- RoHS Compliant Yes

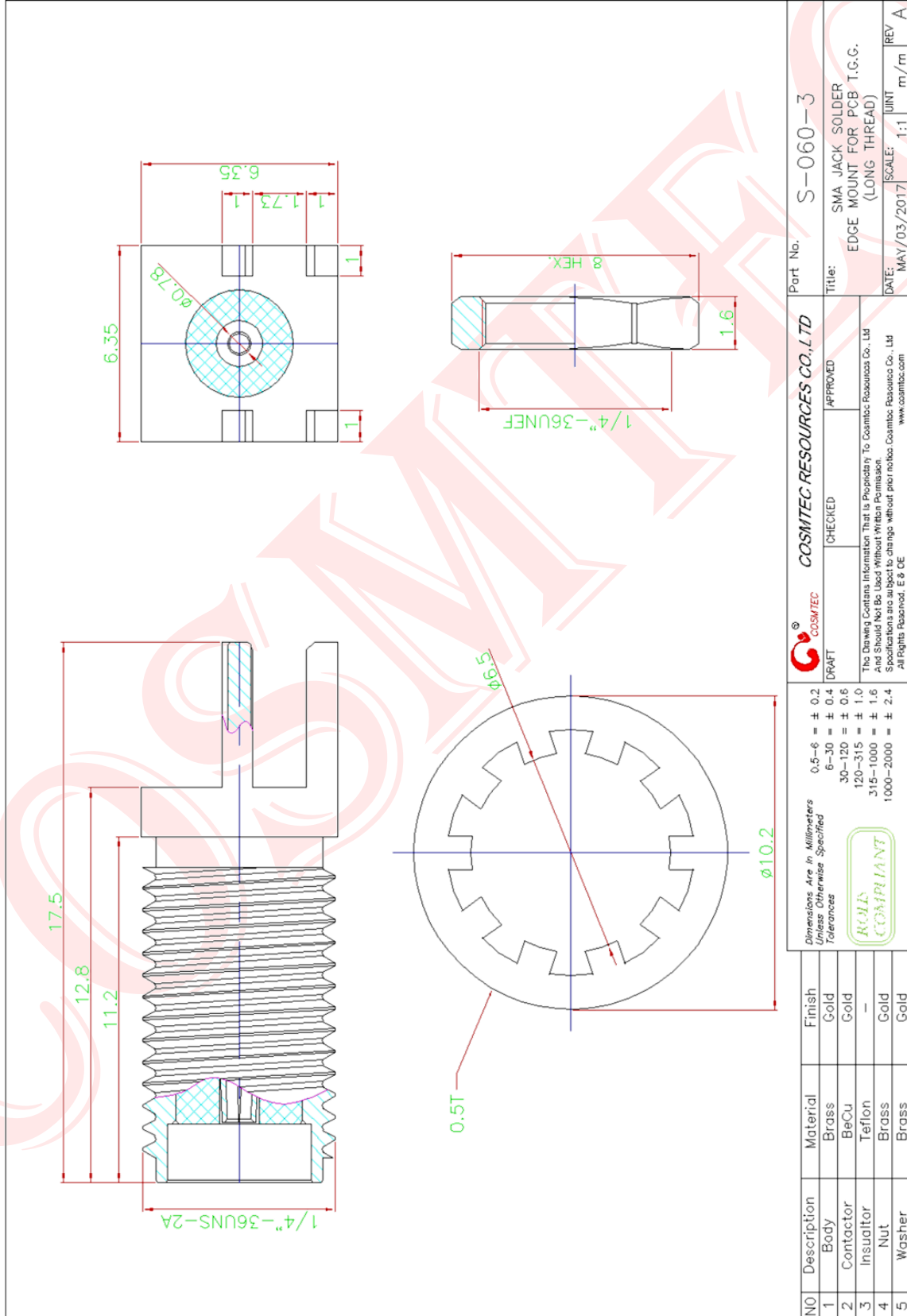
Plotted and Other Data

Notes :

SMA Female Connector Solder Edge Mount
RF Connector Technical Data Sheet
S-060-3



SMA Female Connector Solder Edge Mount
RF Connector Technical Data Sheet
S-060-3



NO		Description	Material	Finish	Tolerances		DRAFT		APPROVED		Part No.	Scale	UNIT	REV
1	Body	Brass	Gold	0.5-6 = ± 0.2	6-30 = ± 0.4	30-120 = ± 0.6	120-315 = ± 1.0	315-1000 = ± 1.6	1000-2000 = ± 2.4	COSMTEC RESOURCES CO., LTD		S-060-3	m/m	A
2	Contact	BeCu	Gold	Dimensions Are in Millimeters Unless Otherwise Specified		Tolerances		The Drawing Contains Information That is Proprietary To Cosmtec Resources Co., Ltd And Should Not Be Used Without Written Permission. Specifications are subject to change without prior notice. Cosmtec Resources Co., Ltd All Rights Reserved. E & OE www.cosmtec.com		SMA JACK SOLDER EDGE MOUNT FOR PCB T.C.G. (LONG THREAD)		1:1		
3	Insulator	Teflon	—											
4	Nut	Brass	Gold											
5	Washer	Brass	Gold											