

**SMA Male Quick to SMA Female Adapter**  
**RF Adapters Technical Data Sheet**  
**S-054-Q-B**

**Configuration**

- SMA Male Quick Connectr 1
- SMA Female Connectr 2
- 50 Ohms

**Features**

- Max VSWR of 1.20 : 1 up to 18 GHz
- SMA Interface compliant with MIL-C-39012

**Applications**

- General Purpose Test


**Electrical Specifications**

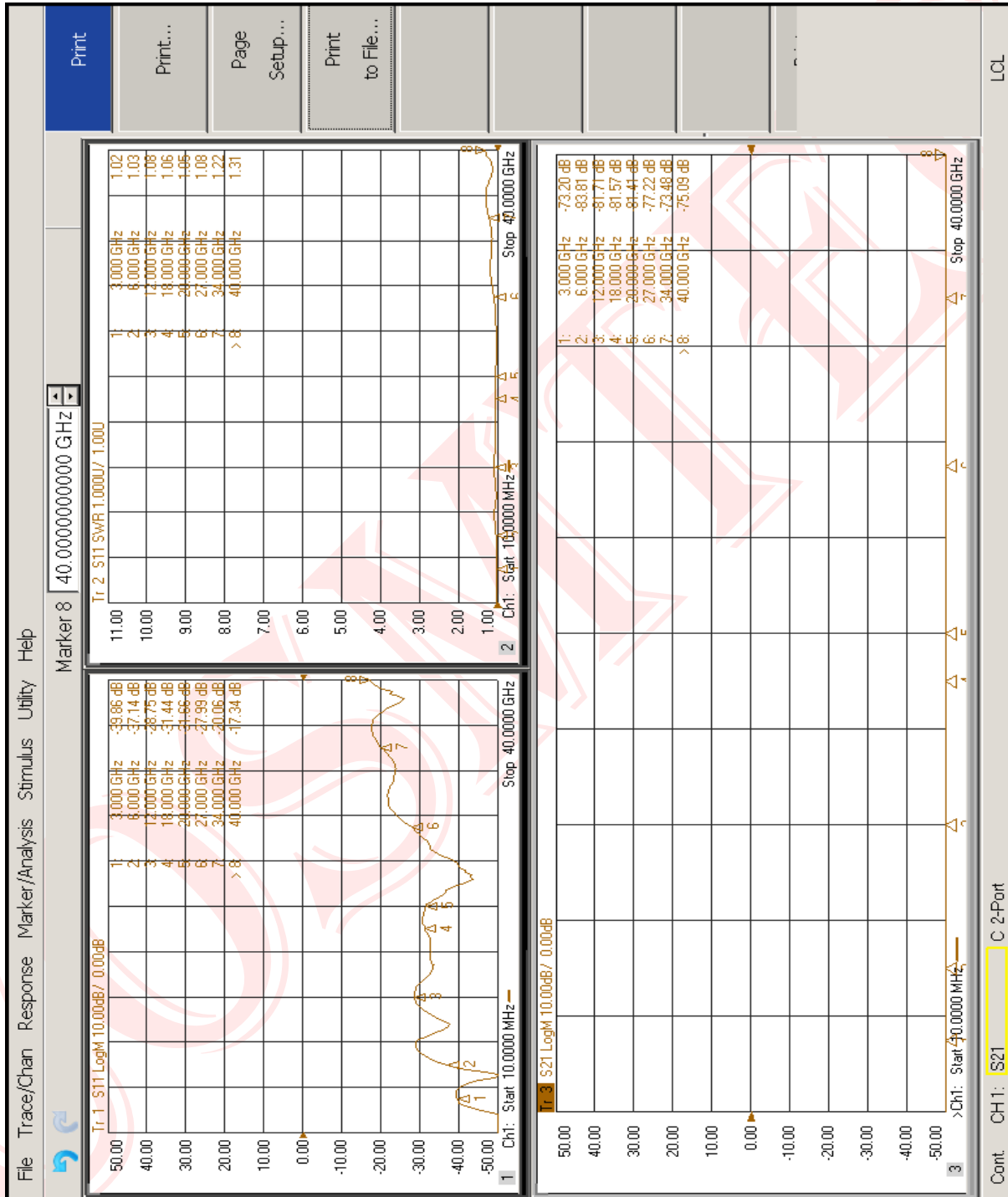
Description	Minimum	Typical	Maximum	Units
Frequency Range	DC		18	GHz
VSWR			1.20 : 1	

**Mechanical Specifications**
**Size**

Length	[mm]	17.4
Width	[mm]	10.3
Height	[mm]	10.3
Weight	[g]	5.5



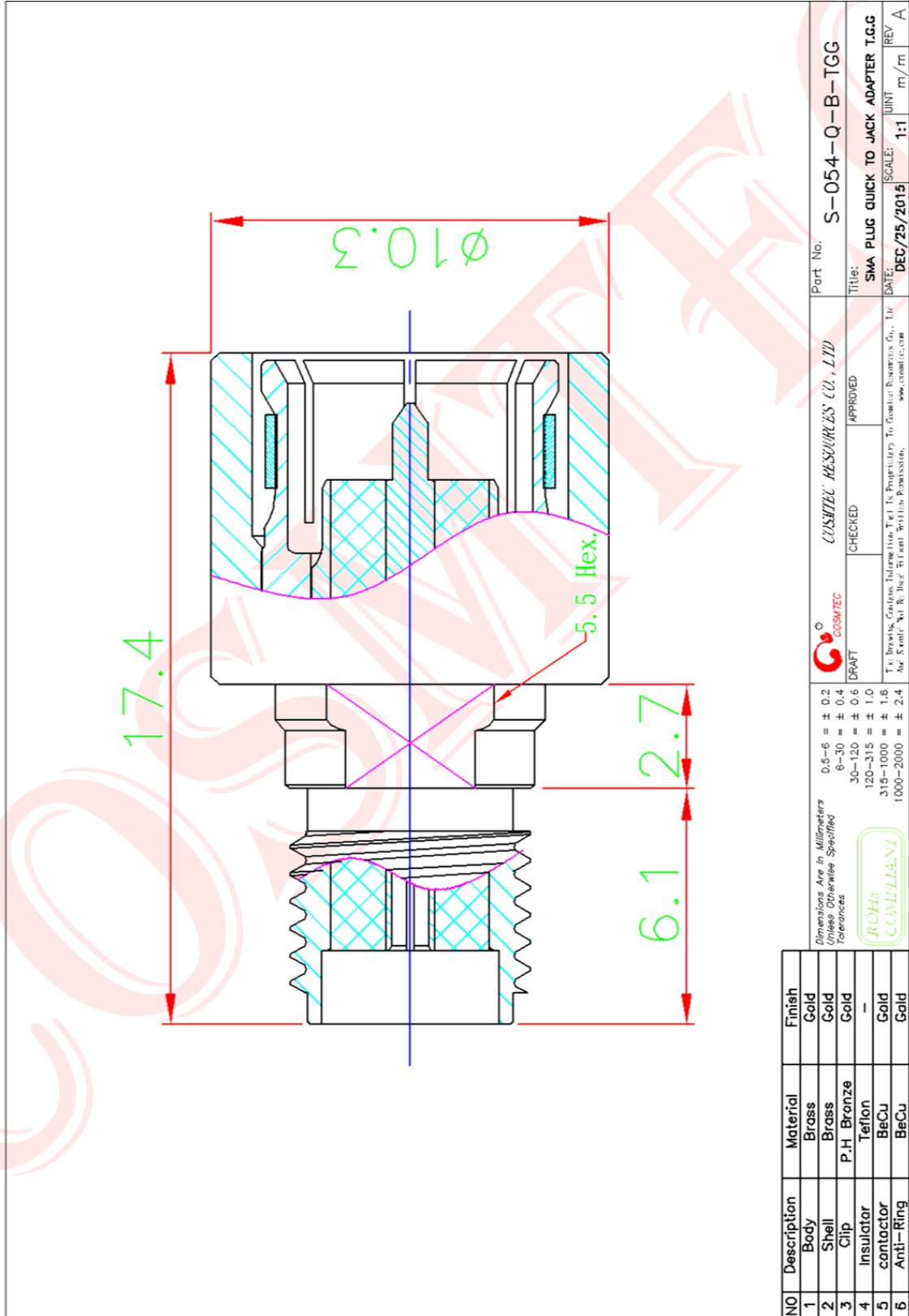
**SMA Male Quick to SMA Female Adapter**  
**RF Adapters Technical Data Sheet**  
**S-054-Q-B**



**Notes :**

This testing data report is both MX-020 and MX-021 combined for testing. The value is included two connectors of MX-020 and MX-021.

**SMA Male Quick to SMA Female Adapter**  
**RF Adapters Technical Data Sheet**  
**S-054-Q-B**



	<b>COSMTEC</b>	<b>COSMTEC RESOURCES CO., LTD</b>	Part No. <b>S-054-Q-B-TGG</b>
DRAFT	CHECKED	APPROVED	Title: <b>SMA PLUG QUICK TO JACK ADAPTER T.G.G</b>
T. H. Hsu, Chief Engineer, T. H. Hsu, Chief Engineer, T. H. Hsu, Chief Engineer, T. H. Hsu, Chief Engineer No. 5, Lane 292, Wen Hsien Road, Tainan, Taiwan   www.cosmtec.com			DATE: <b>DEC/25/2015</b>
			SCALE: <b>1:1</b>
			UNIT: <b>m/m</b>
			REV: <b>A</b>