

SMA Female to N Female Adapter
RF Connector Technical Data Sheet
S-024

Configuration

- SMA Female Connectr 1
- N Female Connectr 2
- 50 Ohms

Features

- Max VSWR of 1.3 : 1 up to 18 GHz
- SMA Interface compliant with MIL-STD-348A
- N Interface compliant with MIL-STD-348A

Applications

- General Purpose Test

Electrical Specifications

Description	Minimum	Typical	Maximum	Units
Frequency Range	DC		18	GHz
VSWR			1.3 : 1	
Operating Voltagr(AC)			1,000	Vrms
Inner Conductor DC Resistance			2	mOhms
Outer Conductor DC Resistance			0.5	mOhms
Insertion Resistance	5,000			mOhms

Mechanical Specifications
Size

Length	[mm]	31.4
Width	[mm]	15.8
Height	[mm]	14.0
Weight	[g]	24.5



SMA Female to N Female Adapter
RF Connector Technical Data Sheet
S-024

Weight

Description	Connector 1	Connector2
Type	SMA Female	N Female
Polarity	Standard	Standard
Interface Specification	MIL-STD-348A	MIL-STD-348A
	MIL-C-39012	MIL-C-39012
Mating Cycles	500	500
Hex Size	-	-
Mating Torque	-	-
Coupling Proof Torque, Min	-	-

Material Specifications

Description	Connector 1		Connector2	
	Material	Plating	Material	Plating
Type	SMA Male	-	N Male	-
Contact	Beryllium Copper	Gold	Beryllium Copper	Gold
Insulation	PTFE	-	PTFE	-
Outer Conductor	-	-	Brass	Nickel
Body	Brass	Nickel	-	-
Gasket	-	-	Silicone	-
Coupling Nut	-	-	Brass	Nickel

Environmental Specifications
Temperature

Operating Range -60 to +165 deg C

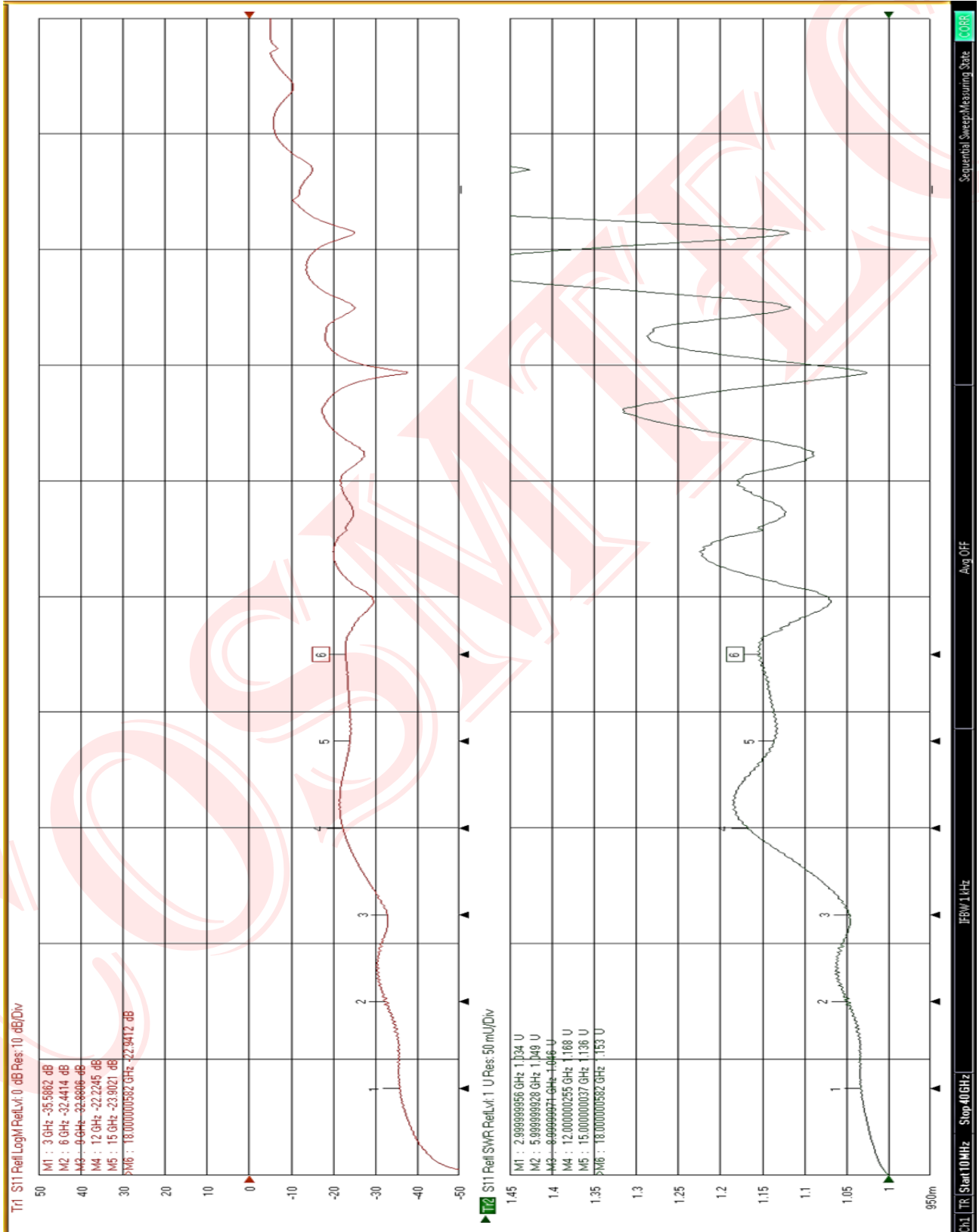
Compliance Certifications

- RoHS Compliant Yes

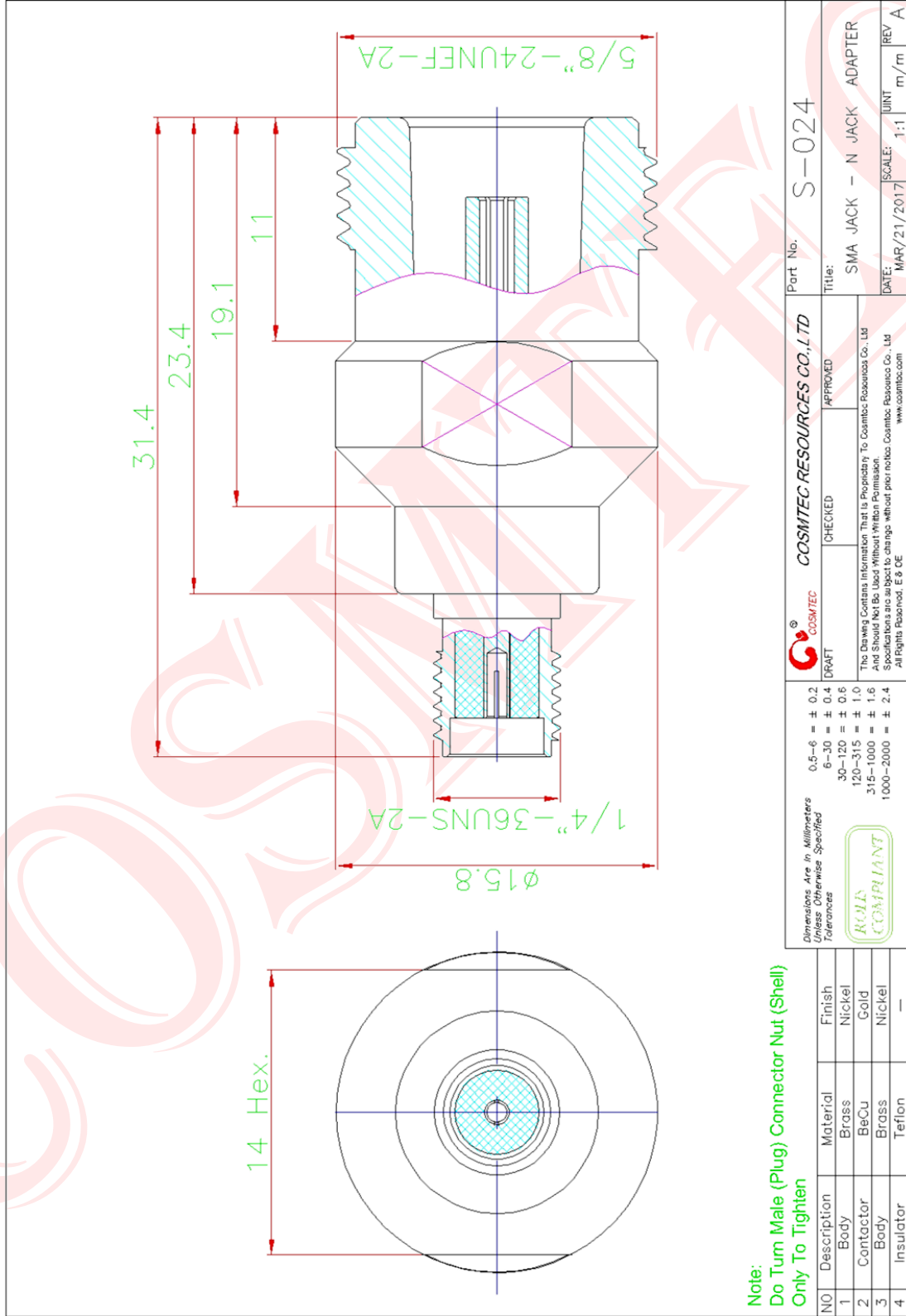
Plotted and Other Data

Notes: Do Turn Male (Plug) Connector's Nut (Shell) Only To Tighten

SMA Female to N Female Adapter
RF Connector Technical Data Sheet
S-024



SMA Female to N Female Adapter
RF Connector Technical Data Sheet
S-024



Note:
 Do Turn Male (Plug) Connector Nut (Shell)
 Only To Tighten

NO	Description	Material	Finish
1	Body	Brass	Nickel
2	Contact	BeCu	Gold
3	Body	Brass	Nickel
4	Insulator	Teflon	—

DRAFT		CHECKED		APPROVED		
The Drawing Contains Information That is Proprietary To Cosmtec Resources Co., Ltd And Should Not Be Used Without Written Permission. Specifications are subject to change, without prior notice Cosmtec Resources Co., Ltd All Rights Reserved. E & OE www.cosmtec.com						
Dimensions Are in Millimeters Unless Otherwise Specified Tolerances		0.5-6 = ± 0.2 6-30 = ± 0.4 30-120 = ± 0.6 120-315 = ± 1.0 315-1000 = ± 1.6 1000-2000 = ± 2.4				Part No. S-024 Title: SMA JACK - N JACK ADAPTER DATE: MAR/21/2017 SCALE: 1:1 UNIT: m/m REV: A