

N Female Terminal Solder Attachment Flange Mount
RF Connector Technical Data Sheet
N-040

Configuration

- N Female Connector
- 50 Ohms
- Flange Mount

Features

- Max VSWR of 1.30 : 1 up to 11 GHz
- N Interface compliant with MIL-STD-348A

Applications

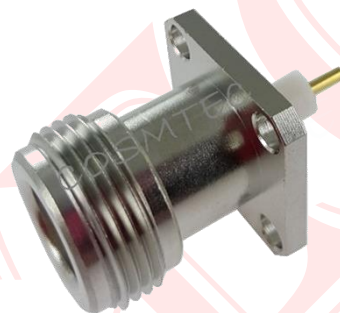
- General Purpose Test

Electrical Specifications

Description	Minimum	Typical	Maximum	Units
Frequency Range	DC		11	GHz
VSWR			1.30 : 1	

Mechanical Specifications
Size

Length	[mm]	29.6
Width	[mm]	17.5
Height	[mm]	17.5
Weight	[g]	17.4



N Female Terminal Solder Attachment Flange Mount
RF Connector Technical Data Sheet
N-040

Description	Connector
Type	N Female
Polarity	Standard
Interface Specification	MIL-STD-348A MIL-C-39012
Mating Cycles	-
Hex Size	-
Mating Torque	-
Coupling Proof Torque, Min	-

Material Specifications

Description	Connector	
	Material	Plating
Type	N Female	-
Contact	Phosphor Bronze	Gold
Insulation	PTFE	-
Outer Conductor	-	-
Body	Brass	Nickel / CuSnZn
Gasket	Silicone	-
Coupling Nut	Brass	Nickel / CuSnZn

Environmental Specifications
Temperature

Operating Range -60 to +165 deg C

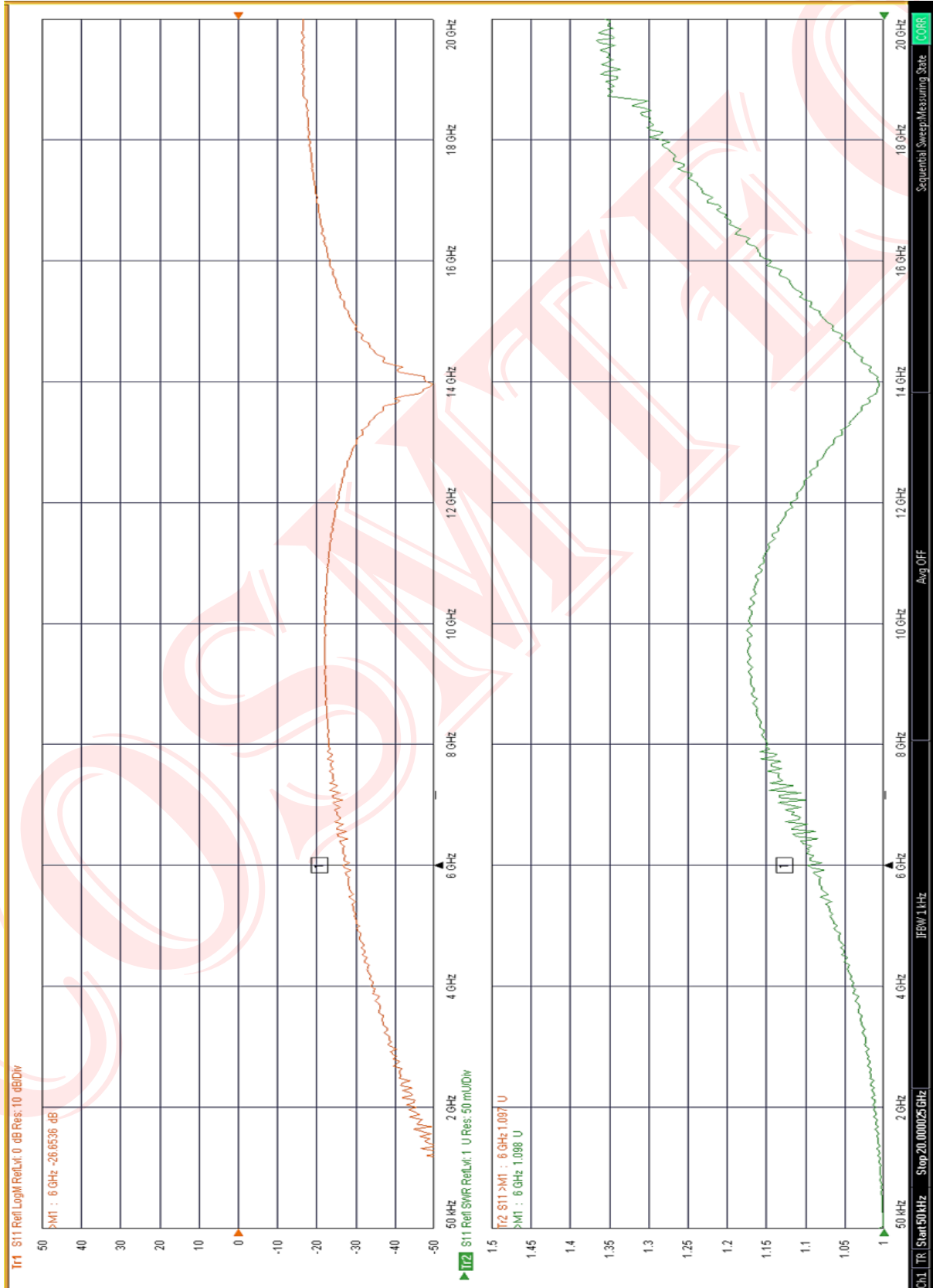
Compliance Certifications

- RoHS Compliant Yes

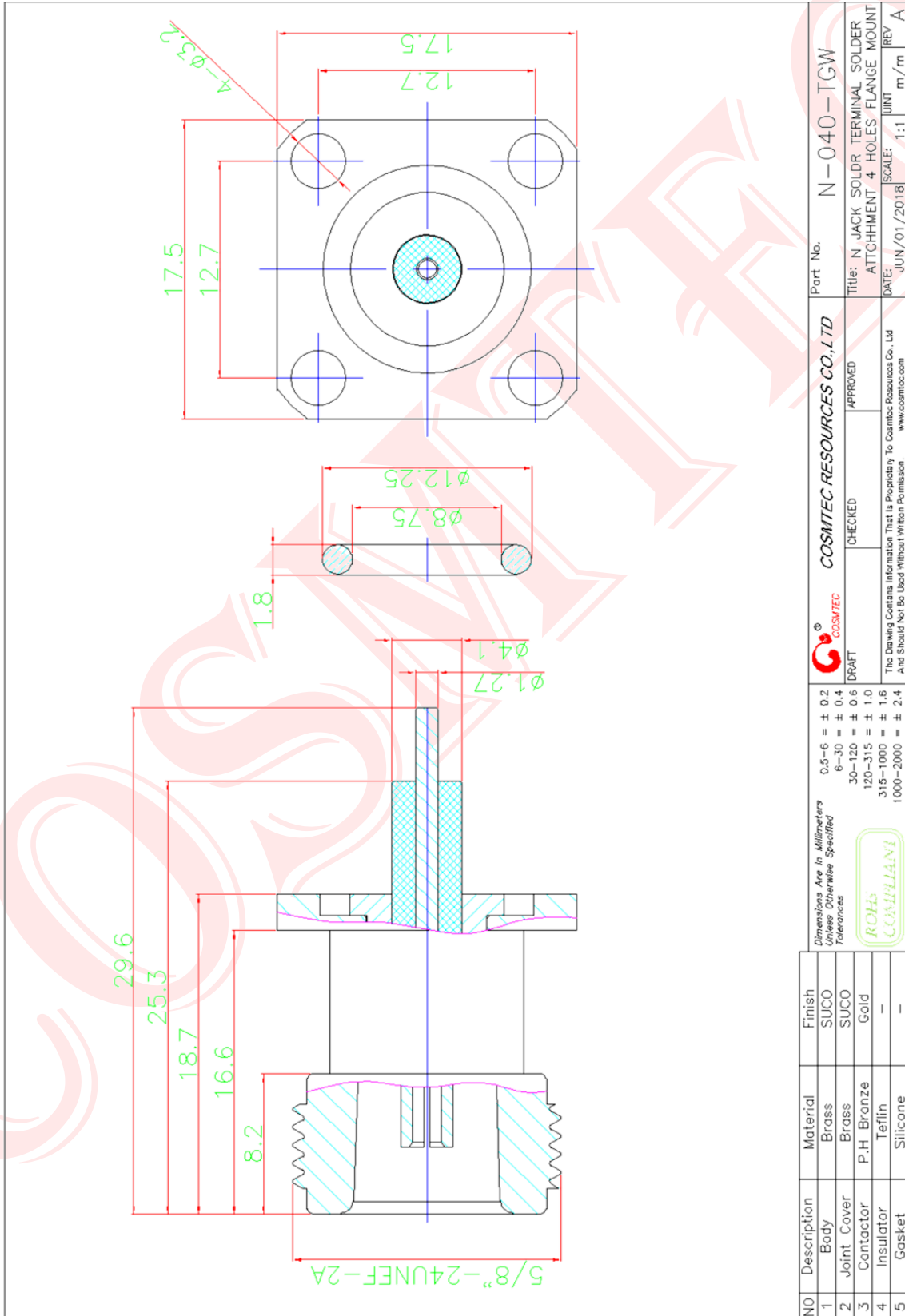
Plotted and Other Data

Notes :

N Female Terminal Solder Attachment Flange Mount
RF Connector Technical Data Sheet
N-040



N Female Terminal Solder Attachment Flange Mount
RF Connector Technical Data Sheet
N-040



Part No.		N-040-TGW	
Title: N JACK SOLDER TERMINAL SOLDER ATTACHMENT 4 HOLES FLANGE MOUNT		DATE: JUN/01/2018	
APPROVED		SCALE: 1:1	
CHECKED		UNIT: m/m	
DRAFT		REV: A	
COSMTEC RESOURCES CO., LTD www.cosmtec.com This Drawing Contains Information That is Proprietary To Cosmtec Resources Co., Ltd And Should Not Be Used Without Written Permission.			
Dimensions Are in Millimeters Unless Otherwise Specified Tolerances (ROHS COMPLIANT)		0.5-6 = ± 0.2 6-30 = ± 0.4 30-120 = ± 0.6 120-315 = ± 1.0 315-1000 = ± 1.6 1000-2000 = ± 2.4	
NO	Description	Material	Finish
1	Body	Brass	SUCO
2	Joint Cover	Brass	SUCO
3	Contact	P.H Bronze	Gold
4	Insulator	Teflin	-
5	Gasket	Silicone	-