

N Female to N Female Adapter

RF Adapters Technical Data Sheet **N-013-18HP-TWW**

Configuration

- N Female Connectr 1
- N Female Connectr 2
- 50 Ohms

Features

- Max VSWR of 1.25 : 1 up to 18 GHz
- N Interface compliant with MIL-STD-348A

Applications

- General Purpose Test

Electrical Specifications

Description	Minimum	Typical	Maximum	Units
Frequency Range	DC		18	GHz
VSWR			1.25 : 1	
Operating Voltage(AC)			1,000	Vrms
Inner Conductor DC Resistance			2	mOhms
Outer Conductor DC Resistance			0.5	mOhms
Insertion Resistance	5,000			mOhms

Mechanical Specifications

Size

Length	[mm]	38.0
Width	[mm]	15.8
Weight	[g]	46.0



N Female to N Female Adapter
RF Adapters Technical Data Sheet
N-013-18HP-TWW

Description	Connector 1	Connector2
Type	N Female	N Female
Polarity	Standard	Standard
Interface Specification	MIL-STD-348A	MIL-STD-348A
	MIL-C-39012	MIL-C-39012
Mating Cycles	500	500
Hex Size	-	-
Mating Torque	-	-
Coupling Proof Torque, Min	-	-

Material Specifications

Description	Connector 1		Connector2	
	Material	Plating	Material	Plating
Type	N Male	-	N Male	-
Contact	Brass	CuSnZn	Brass	CuSnZn
Insulation	PTFE	-	PTFE	-
Outer Conductor	-	-	-	-
Body	Brass	CuSnZn	Brass	CuSnZn
Gasket	-	-	-	-
Coupling Nut	-	-	-	-

Environmental Specifications
Temperature

Operating Range -60 to +165 deg C

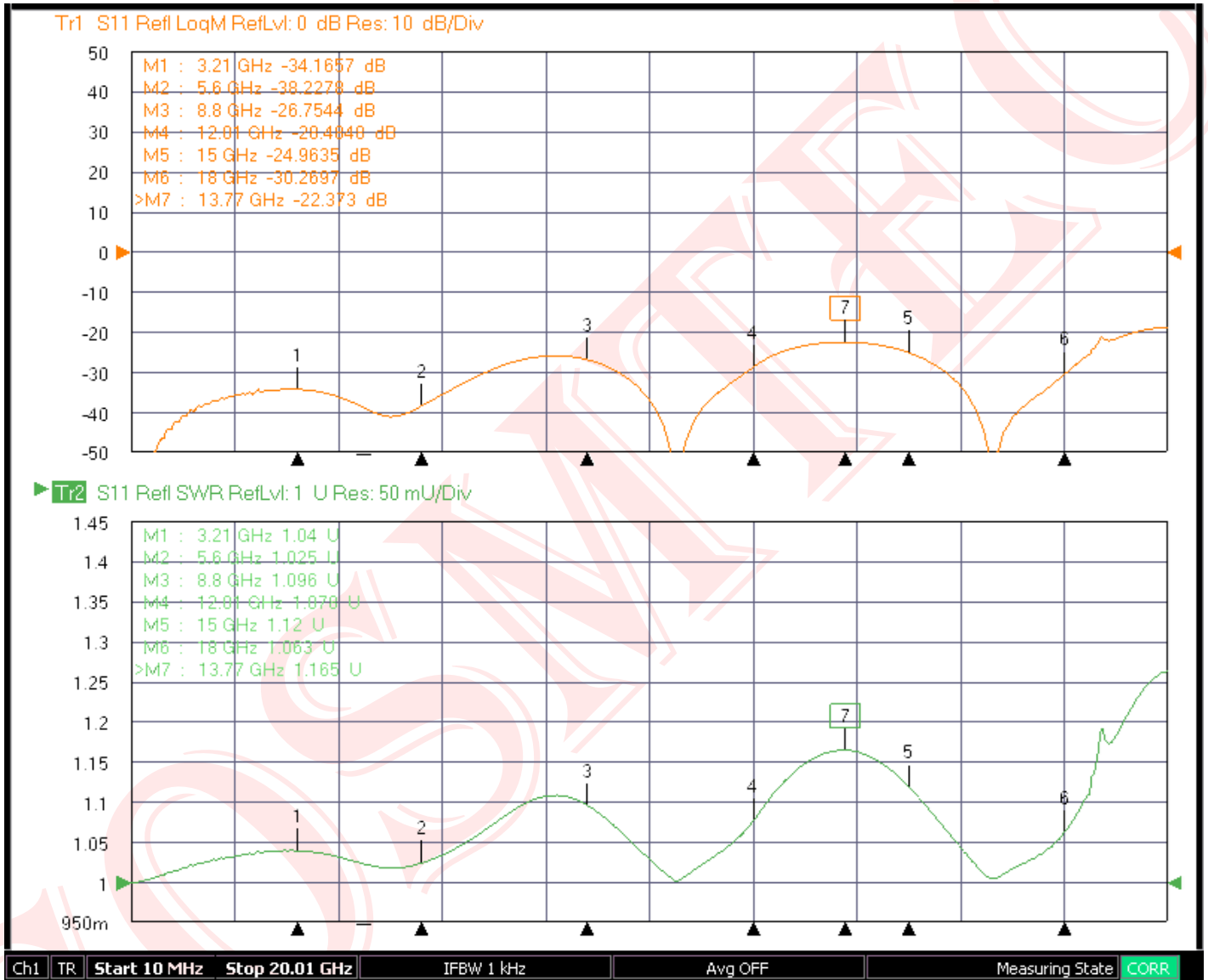
Compliance Certifications

- RoHS Compliant Yes

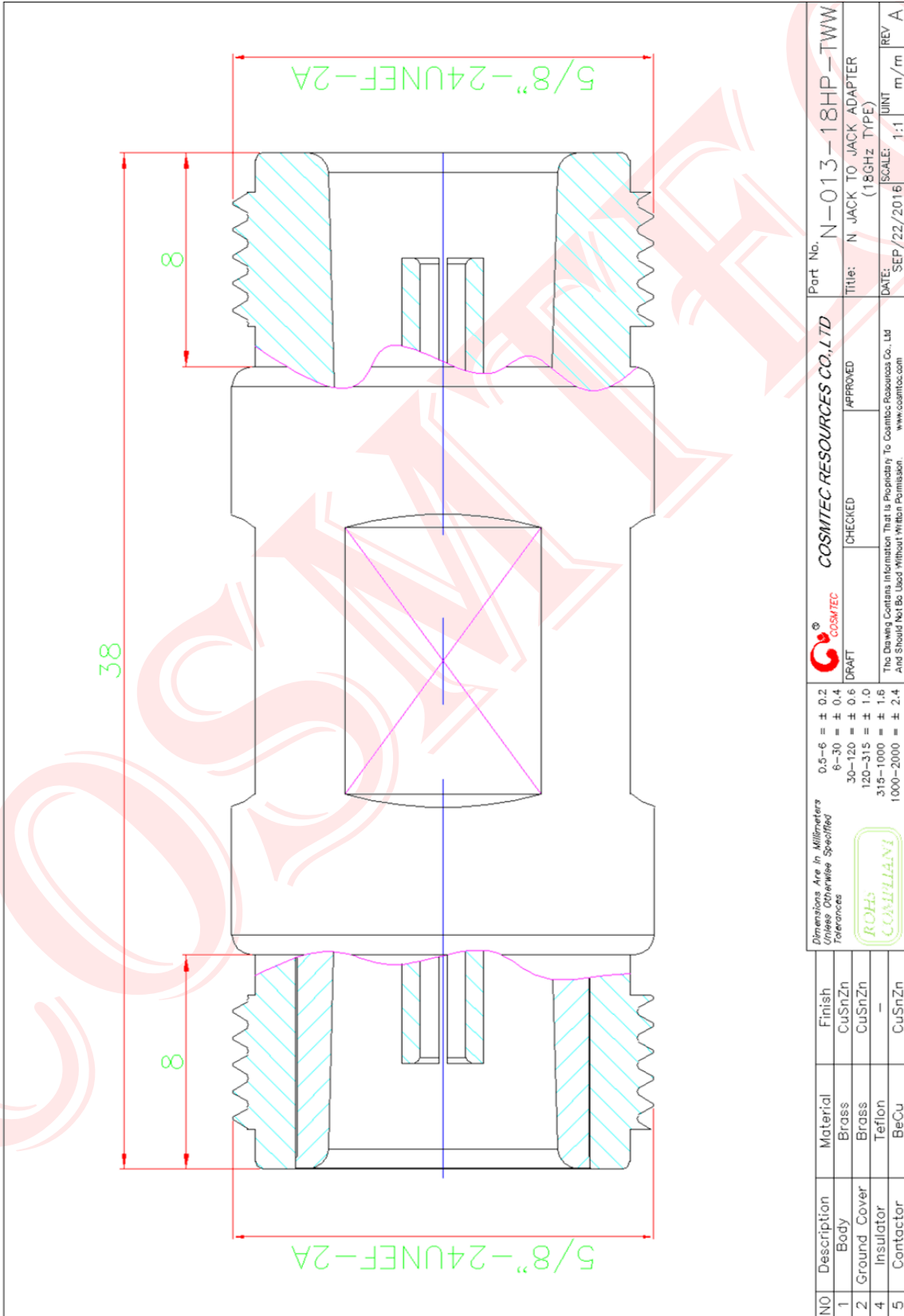
Plotted and Other Data

Notes :

N Female to N Female Adapter
RF Adapters Technical Data Sheet
N-013-18HP-TWW



N Female to N Female Adapter
RF Adapters Technical Data Sheet
N-013-18HP-TWW



Part No. N-013-18HP-TWW		Title: N JACK TO JACK ADAPTER (18GHZ TYPE)		DATE: SEP/22/2016	UNIT: m/m	REV: A
COSMTEC RESOURCES CO., LTD		APPROVED	CHECKED	The Drawing Contains Information That is Proprietary To Cosmtec Resources Co., Ltd. And Should Not Be Used Without Written Permission www.cosmtc.com		
DRAFT		Tolerances				
0.5-6 = ± 0.2		0.5-6 = ± 0.2				
6-30 = ± 0.4		6-30 = ± 0.4				
30-120 = ± 0.6		30-120 = ± 0.6				
120-315 = ± 1.0		120-315 = ± 1.0				
315-1000 = ± 1.6		315-1000 = ± 1.6				
1000-2000 = ± 2.4		1000-2000 = ± 2.4				
ROHS COMPLIANT		ROHS COMPLIANT				
NO	Description	Material	Finish			
1	Body	Brass	CuSnZn			
2	Ground Cover	Brass	CuSnZn			
4	Insulator	Teflon	-			
5	Contactors	BeCu	CuSnZn			